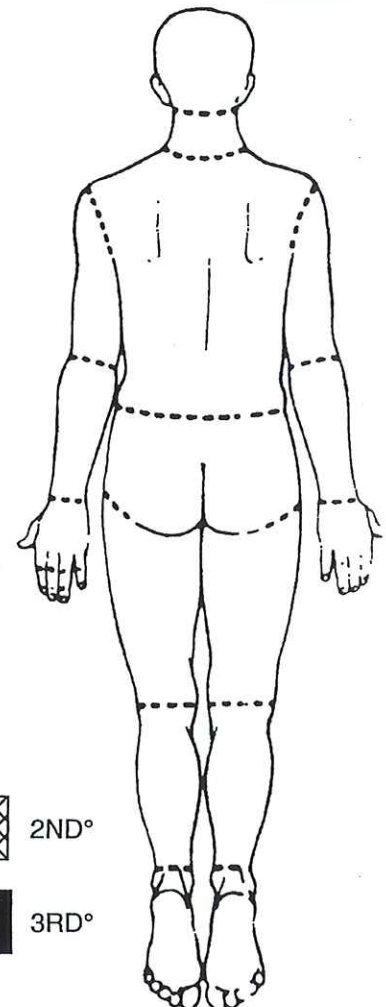
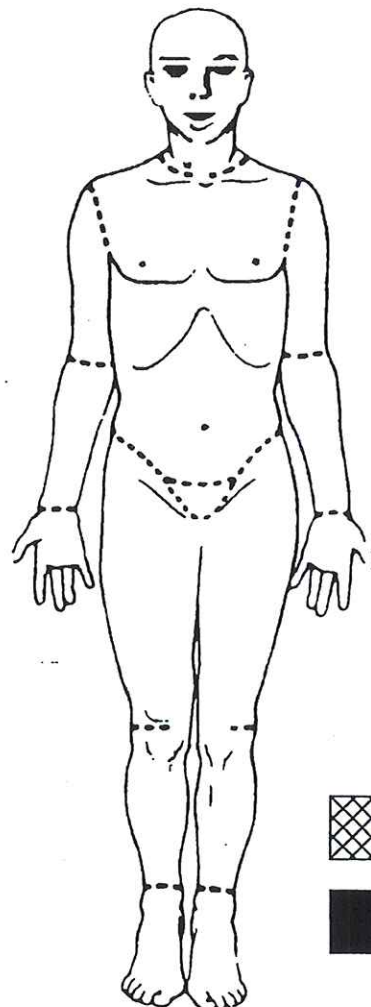
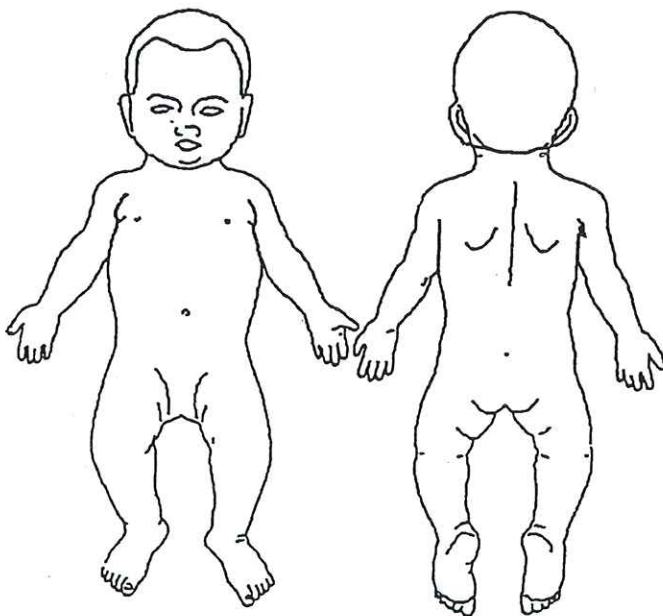


Patient Name:

Regions Hospital MR#:

LUND & BROWDER CHART						
AGE - YEARS						
AREA	0 TO 1	1 TO 4	5 TO 9	10 TO 15	ADULT	% TOTAL
HEAD	19	17	13	10	7	
NECK	2	2	2	2	2	
ANTERIOR TRUNK	13	13	13	13	13	
POSTERIOR TRUNK	13	13	13	13	13	
⊕ BUTTOCK	2.5	2.5	2.5	2.5	2.5	
⊙ BUTTOCK	2.5	2.5	2.5	2.5	2.5	
GENITALIA	1	1	1	1	1	
RIGHT UPPER ARM	4	4	4	4	4	
LEFT UPPER ARM	4	4	4	4	4	
RIGHT LOWER ARM	3	3	3	3	3	
LEFT LOWER ARM	3	3	3	3	3	
RIGHT HAND	2.5	2.5	2.5	2.5	2.5	
LEFT HAND	2.5	2.5	2.5	2.5	2.5	
RIGHT THIGH	5.5	5.5	8.5	8.5	9.5	
LEFT THIGH	5.5	5.5	8.5	8.5	9.5	
RIGHT LEG	5	5	5.5	6	7	
LEFT LEG	5	5	5.5	6	7	
RIGHT FOOT	3.5	3.5	3.5	3.5	3.5	
LEFT FOOT	3.5	3.5	3.5	3.5	3.5	
LUND & BROWDER CHART						TOTAL



2ND°



3RD°